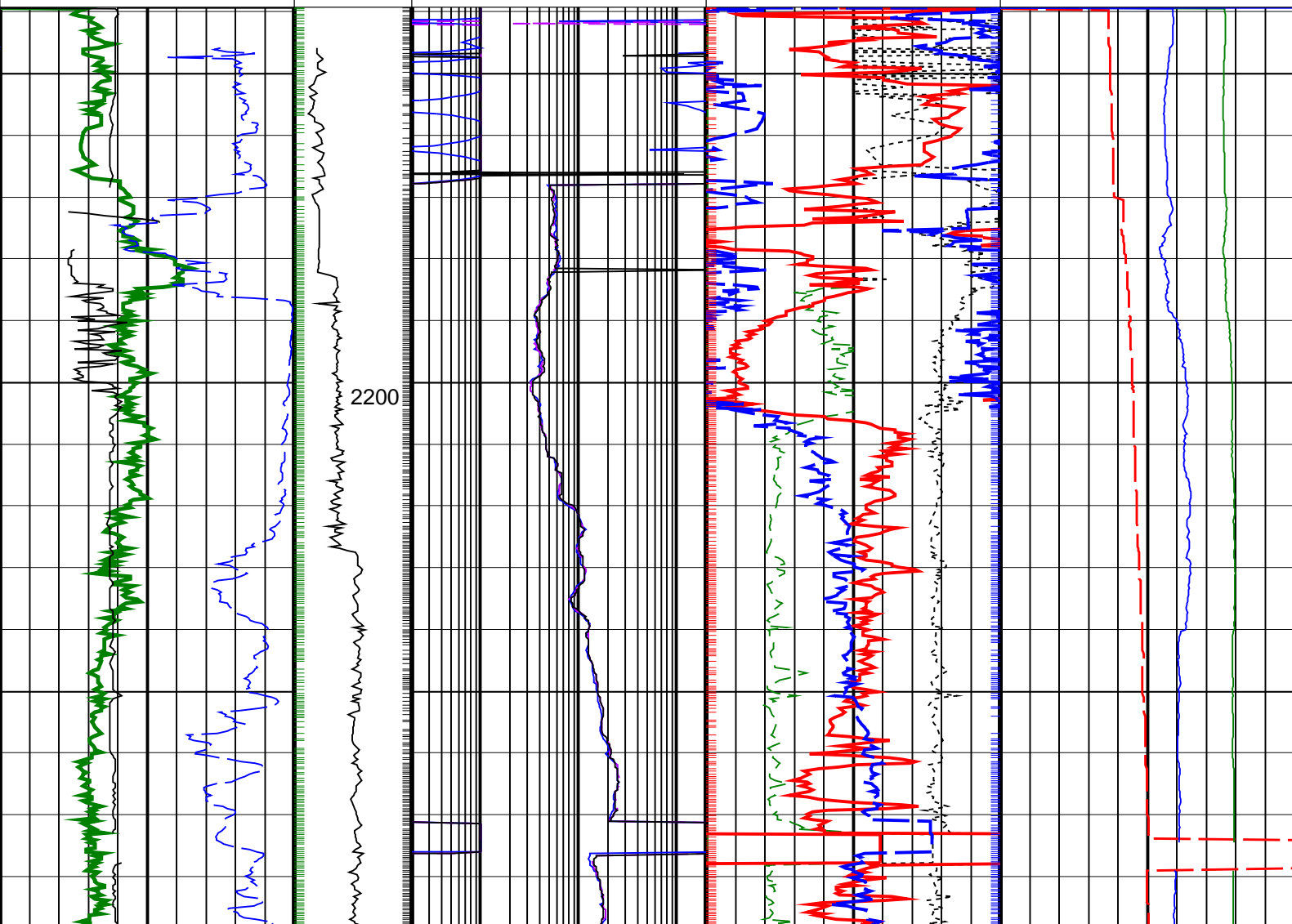
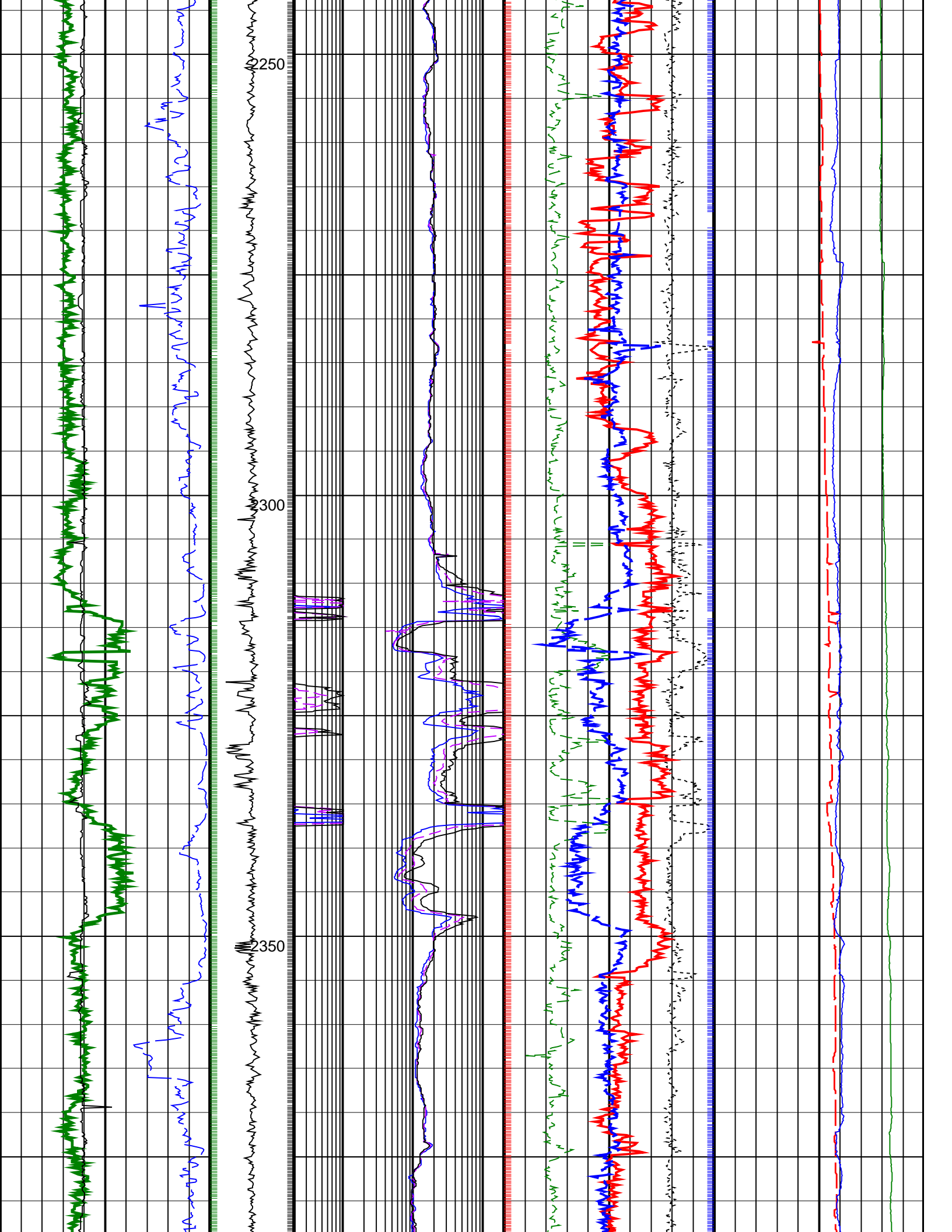


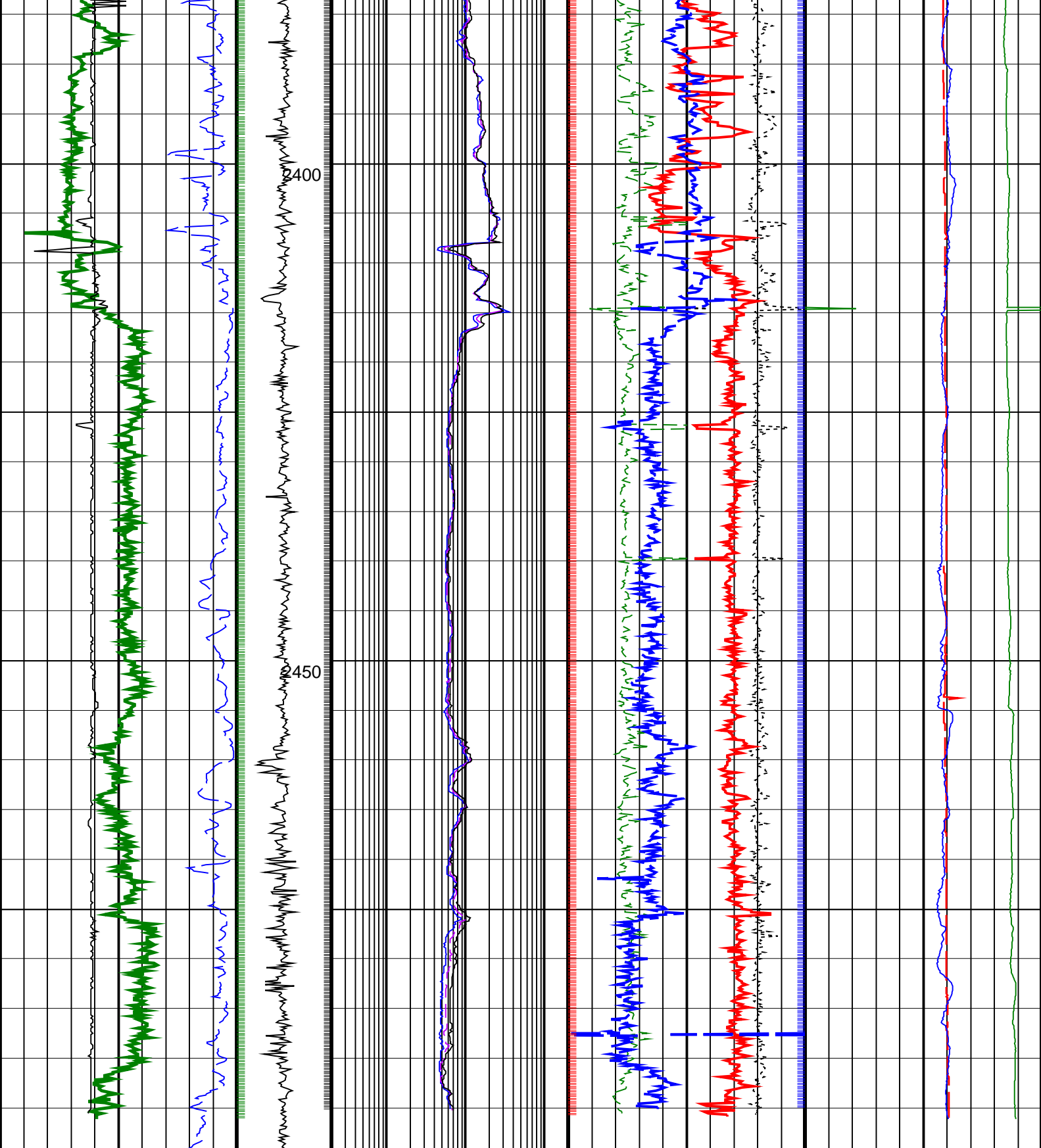
PIP SUMMARY

Density Samples +
 Gamma Ray Samples +
 Resistivity Samples +
 Neutron Samples +

Gamma Ray, Average, Real-Time, Computed Downhole (GRMA_DH_ECO_RT) (GAPI)	ARC Phase Shift Resistivity 40 inch at 2 MHz, Real-Time (P40H_ECO_RT) (OHMM)	Thermal Neutron Porosity, Average, Real-Time (TNPH_ECO_RT) (PU)	Equivalent Circulating Density, Real-Time (ECD_ECO_RT) (LB/G)
0 200	0.2 200	45 -15	10 15
Ultrasonic Caliper, Average Diameter, Real-Time, Computed Downhole (UCAV_DH_ECO_RT) (IN)	ARC Phase Shift Resistivity 28 inch at 2 MHz, Real-Time (P28H_ECO_RT) (OHMM)	Photoelectric Factor, Bottom, Real-Time, Computed Downhole (PEB_DH_ECO_RT) (G/C3)	Bulk Density Correction, Bottom, Real-Time Computed Downhole (DRHB_DH_ECO_RT) (G/C3)
6 16	0.2 200	0 10	Downhole Annulus Pressure, Real Time, Computed Downhole (DHAP_DH_ECO_RT) (PSI)
ROP*5 (ROP5) (M/HR)	MWD Collar RPM (CRPM_RT) (RPM)	ARC Phase Shift Resistivity 16 inch at 2 MHz, Real-Time (P16H_ECO_RT) (OHMM)	Bulk Density, Bottom, Real-Time, Computed Downhole (ROBB_DH_ECO_RT) (G/C3)
200 0	0 400	0.2 200	Downhole Annulus Temperature, Real Time, Computed Downhole (DHAT_DH_ECO_RT) (DEGC)
		1.85 2.85	0 200







<div><div>ROP*5 (ROP5)</div><div>(M/HR)</div><div>2000</div></div>	<div><div>MWD Collar RPM</div><div>(CRPM_RT)</div><div>(RPM)</div><div>0400</div></div>	<div><div>ARC Phase Shift Resistivity</div><div>16 inch at 2 MHz, Real-Time</div><div>(P16H_ECO_RT)</div><div>0.2200</div><div>(OHMM)</div></div>	<div><div>Bulk Density, Bottom,</div><div>Real-Time, Computed</div><div>Downhole (ROBB_DH_ECO_RT)</div><div>1.852.85</div><div>(G/C3)</div></div>		<div><div>Downhole Annulus</div><div>Temperature, Real Time,</div><div>Computed Downhole (DHAT_DH_ECO_RT)</div><div>0200</div><div>(DEGC)</div></div>
<div><div>Ultrasonic Caliper, Average</div><div>Diameter, Real-Time,</div><div>Computed Downhole (UCAV_DH_ECO_RT)</div></div>		<div><div>ARC Phase Shift Resistivity</div><div>28 inch at 2 MHz, Real-Time</div><div>(P28H_ECO_RT)</div><div>0.2200</div><div>(OHMM)</div></div>	<div><div>Photoelectric</div><div>Factor,</div><div>Bottom,</div><div>Real-Time,</div><div>Computed</div><div>Downhole</div></div>	<div><div>Bulk Density</div><div>Correction,</div><div>Bottom,</div><div>Real-Time</div><div>Computed</div><div>Downhole</div></div>	<div><div>Downhole Annulus Pressure,</div><div>Real Time, Computed</div><div>Downhole (DHAP_DH_ECO_RT)</div></div>

6	(IN)	16	0.2	(OHMM)	200	0	(PEB_DH_ECO_RT)	10	(DRHB_DH_ECO_RT)	0	(PSI)	6000
Gamma Ray, Average, Real-Time, Computed Downhole (GRMA_DH_ECO_RT)			ARC Phase Shift Resistivity 40 inch at 2 MHz, Real-Time (P40H_ECO_RT)			Thermal Neutron Porosity, Average, Real-Time (TNPH_ECO_RT)			Equivalent Circulating Density, Real-Time (ECD_ECO_RT)			
0	(GAPI)	200	0.2	(OHMM)	200	45	(PU)	-15	10	(LB/G)	15	

PIP SUMMARY

Density Samples

Gamma Ray Samples

Resistivity Samples

Neutron Samples

IDEAL Version: ID11_0C_01

IDEAL